



*Tohoku Calendar 2007*



*Snowy Mount Bandai, seen from the Hideyo Noguchi museum in Inawashiro. Noguchi was a pioneering doctor and medical researcher. The museum preserves his birthplace as it was when he was young, including traditional rainwear (right).*



# JANUARY

SUN	MON	TUE	WED	THU	FRI	SAT
	1	2	3	4	5	6
7	8	9	10	11	12	13
14	15	16	17	18	19	20
21	22	23	24	25	26	27
28	29	30	31			



# FEBRUARY

*Matsushima, a scenic beauty spot near Sendai and reputedly one of the three most beautiful views in Japan.*



SUN	MON	TUE	WED	THU	FRI	SAT
				1	2	3
4	5	6	7	8	9	10
11	12	13	14	15	16	17
18	19	20	21	22	23	24
25	26	27	28			



# MARCH

March 3rd is the "Girls' festival" or "Doll festival" in Japan. Emperor and Empress dolls, and sometimes a whole retinue of servants, are put on display. These are part of a traditional set on display near the Tsurugajo castle (right) in Aizu-Wakamatsu.

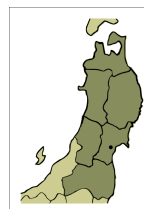


SUN	MON	TUE	WED	THU	FRI	SAT
				1	2	3
4	5	6	7	8	9	10
11	12	13	14	15	16	17
18	19	20	21	22	23	24
25	26	27	28	29	30	31



# APRIL

*Spring is the time for cherry blossom and “Hanami” (blossom-viewing) parties.*



SUN	MON	TUE	WED	THU	FRI	SAT
1	2	3	4	5	6	7
8	9	10	11	12	13	14
15	16	17	18	19	20	21
22	23	24	25	26	27	28
29	30					



# MAY

*Aoba-Matsuri (festival) in Sendai. This commemorates the founder of the city, Date Masamune. The picture on the right shows his mausoleum, Zuihoden.*



SUN	MON	TUE	WED	THU	FRI	SAT
		1	2	3	4	5
6	7	8	9	10	11	12
13	14	15	16	17	18	19
20	21	22	23	24	25	26
27	28	29	30	31		



# JUNE

*Mount Zao, a volcanic crater with a lake whose colour appears to change depending on the weather. Right: hundreds of hydrangeas flower in the wet early summer in Japan.*



SUN	MON	TUE	WED	THU	FRI	SAT
					1	2
3	4	5	6	7	8	9
10	11	12	13	14	15	16
17	18	19	20	21	22	23
24	25	26	27	28	29	30



# JULY

*Lotus flowers at Hiraizumi. 1000 years ago, this was one of the most important towns in Japan and a centre of the powerful Fujiwara clan, but now only a few temples of the original complex remain. Right: boating in the nearby Geibikei gorge.*



SUN	MON	TUE	WED	THU	FRI	SAT
1	2	3	4	5	6	7
8	9	10	11	12	13	14
15	16	17	18	19	20	21
22	23	24	25	26	27	28
29	30	31				





# AUGUST

*The Nebuta festival in Aomori, on the north coast of Honshu. A parade of floats carrying giant paper models of mythological figures processes through the town.*



SUN	MON	TUE	WED	THU	FRI	SAT
			1	2	3	4
5	6	7	8	9	10	11
12	13	14	15	16	17	18
19	20	21	22	23	24	25
26	27	28	29	30	31	



# SEPTEMBER

*The Kanto festival in Akita.  
Lanterns are suspended from a  
bamboo pole and then balanced  
on the hands, shoulders, hips  
etc. Sometimes things go wrong  
and it all falls down (right)!*

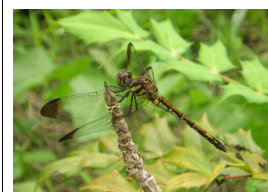


SUN	MON	TUE	WED	THU	FRI	SAT
30						1
2	3	4	5	6	7	8
9	10	11	12	13	14	15
16	17	18	19	20	21	22
23	24	25	26	27	28	29



# OCTOBER

*Red dragonfly on Tohoku  
University campus,  
Sendai*

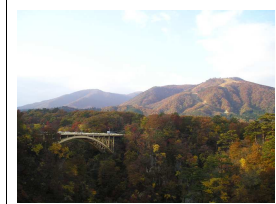


SUN	MON	TUE	WED	THU	FRI	SAT
	1	2	3	4	5	6
7	8	9	10	11	12	13
14	15	16	17	18	19	20
21	22	23	24	25	26	27
28	29	30	31			



# NOVEMBER

*Autumn leaves in Sendai  
(above) and in Naruko  
gorge (right)*

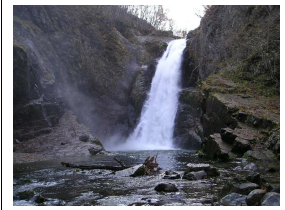


SUN	MON	TUE	WED	THU	FRI	SAT
				1	2	3
4	5	6	7	8	9	10
11	12	13	14	15	16	17
18	19	20	21	22	23	24
25	26	27	28	29	30	



# DECEMBER

*Akiu Otaki, a spectacular waterfall near Sendai.*



SUN	MON	TUE	WED	THU	FRI	SAT
30	31					1
2	3	4	5	6	7	8
9	10	11	12	13	14	15
16	17	18	19	20	21	22
23	24	25	26	27	28	29